

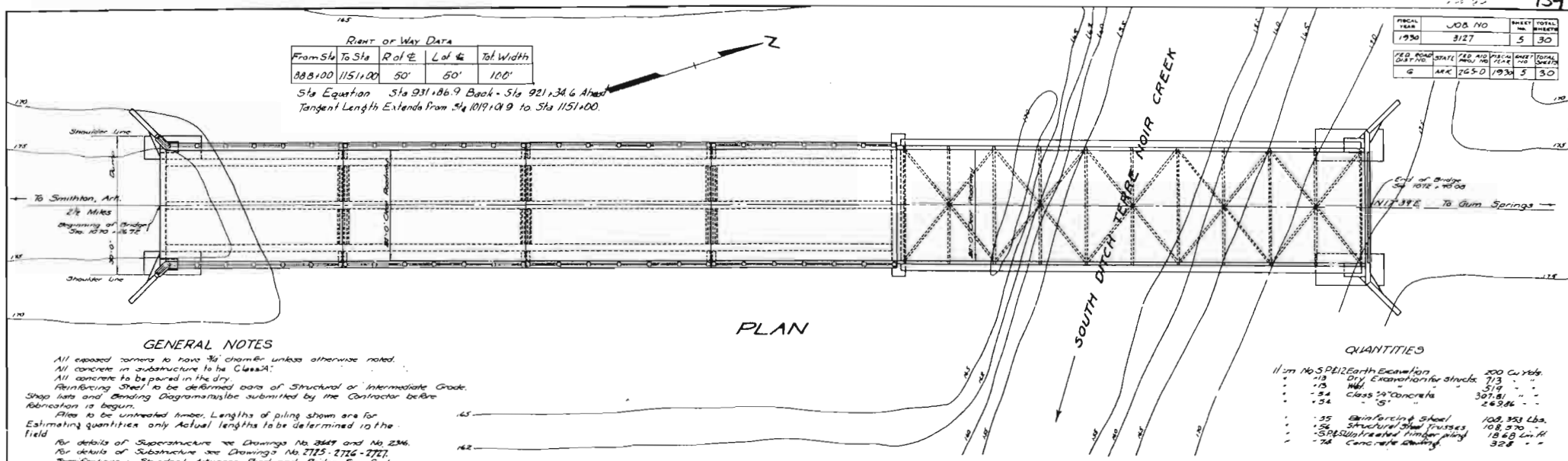
Right of Way Data			
From Sta	To Sta	R of C	Tot. Width
888+00	1151+00	50'	100'

Sta Equation Sta 931+86.9 Back - Sta 921+34.6 Ahead  
Tangent Length Extends from Sta 1019+09.9 to Sta 1151+00.

YEAR	JOB NO	SHEET NO	TOTAL SHEETS
1930	3127	5	30

FED. ROAD DIST. NO.	STATE	FED. AID PROJ. NO.	FISCAL YEAR	CONTRACT NO.	TOTAL SHEETS
6	ARK	245-D	1934	5	30



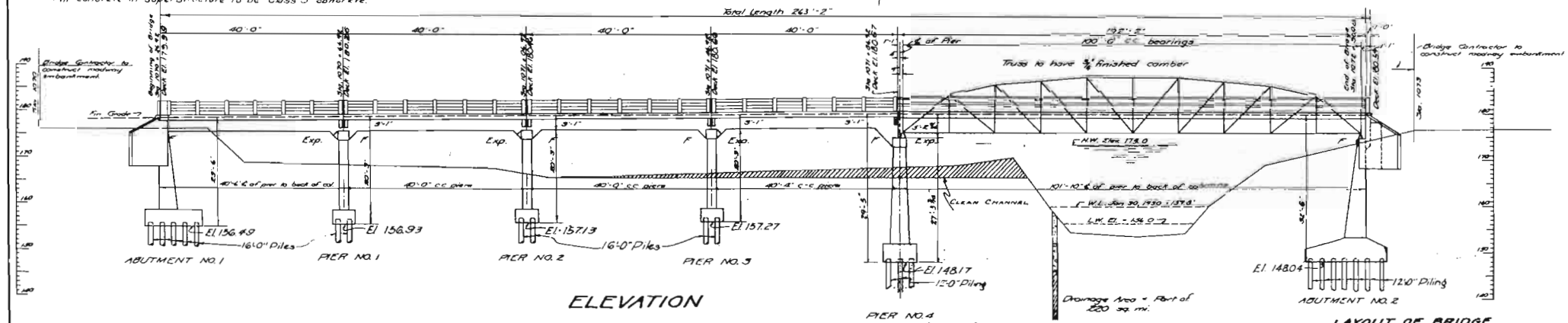
PLAN

GENERAL NOTES

All exposed corners to have 3/4" chamfer unless otherwise noted.  
All concrete in substructure to be Class "A".  
All concrete to be poured in the dry.  
Reinforcing Steel to be determined per Structural or Intermediate Grade.  
Shop lists and Bending Diagrams to be submitted by the Contractor before fabrication is begun.  
Piles to be untreated timber. Lengths of piling shown are for estimating quantities only. Actual lengths to be determined in the field.  
For details of Superstructure see Drawings No. 2369 and No. 2366.  
For details of Substructure see Drawings No. 2715-2716-2717.  
Specifications: Standard Arkansas Road and Bridge Specifications, adopted May 25, 1925, and revised.  
Volume occupied by embedded pileheads not included in pay quantity of concrete in footing.  
Precast Concrete Handrails to be 1 1/2" min. Max. Agg. #.  
Soil Piles to be Class "S" Concrete.  
Rogain Drains and expansion devices to be paid for at the unit price bid for reinforcing Steel.  
All concrete in superstructure to be Class "S" concrete.

QUANTITIES

Item No.	Description	Quantity	Unit
11	Excavation for structure	200	Cu Yds.
12	Dry Excavation for structure	713	"
13	Wall	519	"
14	Class "A" Concrete	307.81	"
15	Class "S" Concrete	269.86	"
16	Reinforcing Steel	108,353	Lbs.
17	Structural Steel Trusses	108,370	"
18	Structural Steel Trusses	18,480	Lbs.
19	Concrete Paving	32.8	"



ELEVATION

ELM. Elev. 167.46  
Nail in root of 14" Water Coat  
1.85' dia of Sta. 1079+00

TEST HOLE  
Surface El. 158.81  
Then 7'-0" Clay & Sand  
6'-0" Fine Gravel  
10'-0" Hard Blue Clay.

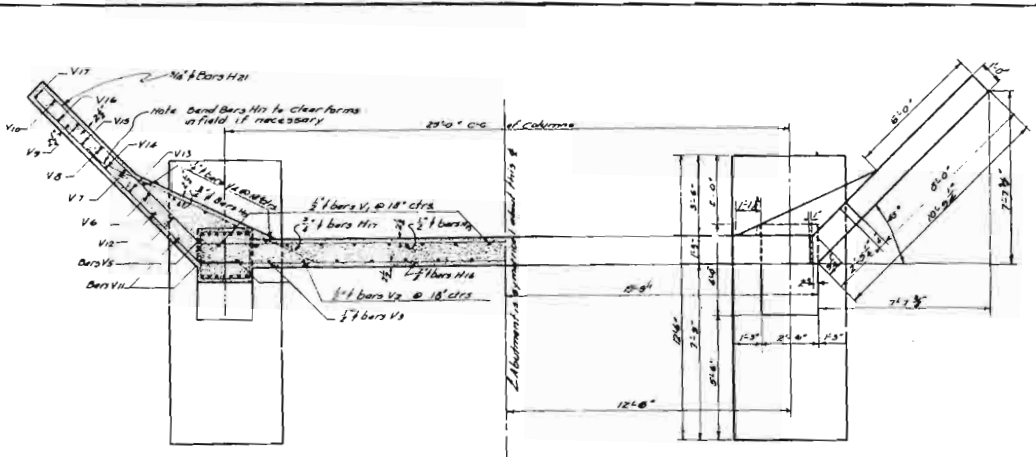
LAYOUT OF BRIDGE  
SOUTH DITCH OF TERRE NOIR CR.  
GURDON-ARKADELPHIA ROAD  
CLARK COUNTY  
ROUTE 5', SEC. 1

ARKANSAS STATE HIGHWAY COMMISSION  
LITTLE ROCK, ARK.

Drawn By: H.G.B. Date: 4-22-30  
Traced By: H.G.B. Date: 4-22-30  
Checked By: H.G.B. Date: 5-7-30

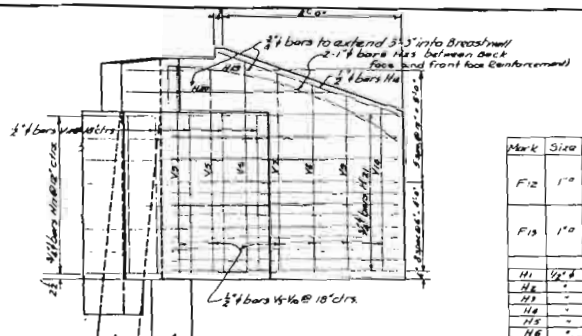
H.G.B.  
BRIDGE ENGINEER

BRIDGE NO. 1477 DRAWING NO. 2724

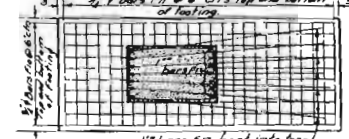


HALF SECTION D-B  
Showing location of Reinforcement in wingwall and breastwall

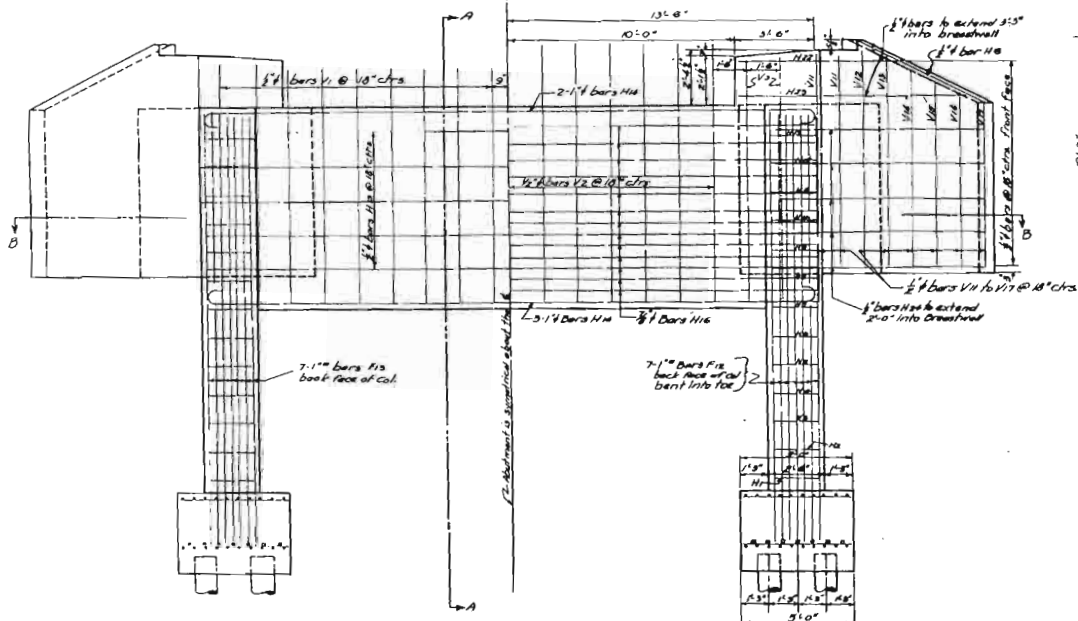
HALF PLAN



REAR ELEVATION OF WINGWALL  
Showing Reinforcement in back face

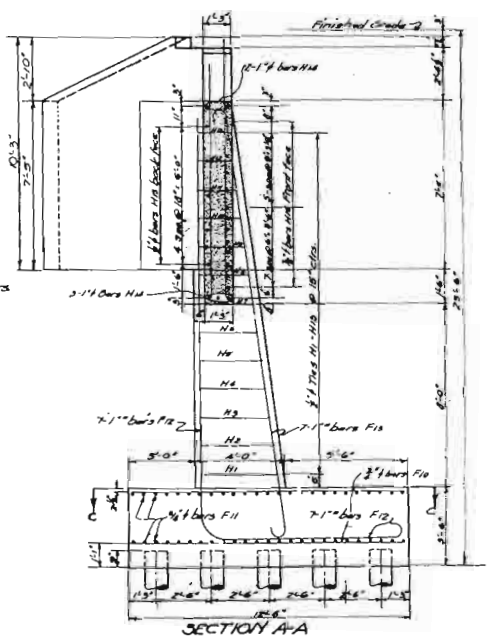


SECTION C-C  
Showing Reinforcement in footing



HALF FRONT ELEVATION  
Showing Reinforcement in back face of breastwall

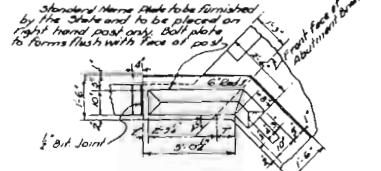
HALF FRONT ELEVATION  
Showing Reinforcement in front face of breastwall and wing walls



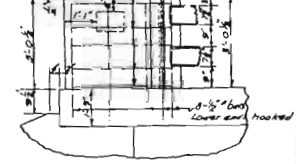
SECTION A-A

PROJECT NO.	JOB NO.	SHEET NO.	TOTAL SHEETS
1930	3127	G	30
DESIGNED BY	DATE	CHECKED BY	DATE
6	10-5-0	1930	6

Mark	Size	Length	Bending Diagrams
F12	1"	27'-0"	
F13	1"	21'-0"	
H1	1/2"	12'-8"	
H2	1/2"	12'-0"	
H3	1/2"	11'-8"	
H4	1/2"	11'-2"	
H5	1/2"	11'-0"	
H6	1/2"	10'-8"	
H7	1/2"	10'-6"	
H8	1/2"	10'-4"	
H9	1/2"	10'-2"	
H10	1/2"	10'-0"	
H11	1/2"	9'-8"	
H12	1/2"	9'-6"	
H13	1/2"	9'-4"	
H14	1"	29'-0"	
H23	1"	12'-6"	
H19	3/4"	7'-5"	
H20	3/4"	10'-0"	
H22	1/2"	8'-0"	
H24	1/2"	12'-6"	
H25	1/2"	12'-6"	



PLAN OF HANDRAIL TURNOUT



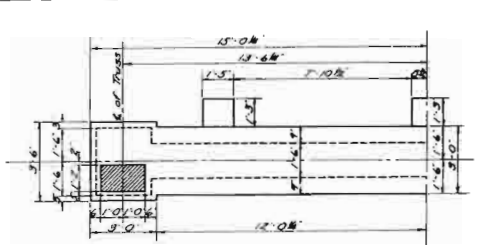
ELEVATION OF HANDRAIL TURNOUT  
Scale 1/2" = 1'-0"

DETAILS OF ABUTMENT NO. 1  
FOR BRIDGE OVER  
SOUTH DITCH OF TERRE-HAUX CREEK  
GUDDON-ARCADELPHIA ROAD  
CLARK CO.  
ROUTE 51 SEC. 1

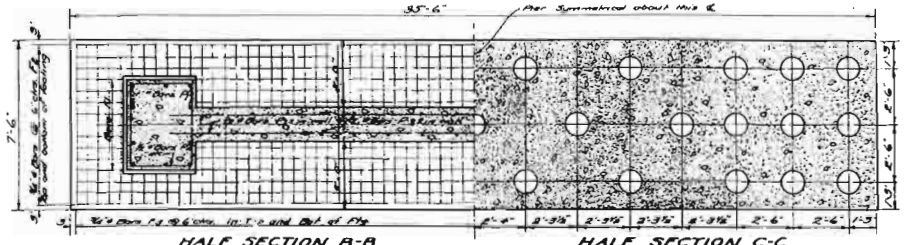
ARKANSAS STATE HIGHWAY DEPARTMENT  
LITTLE ROCK, ARK.  
Drawn By: M.C.D. Date: 10-5-30  
Traced By: M.C.D. Date: 10-5-30  
Checked By: J.B.L. Date: 10-5-30  
Scale: 3/16" = 1'-0"  
BRIDGE NO. 1477 DRAWING NO. 2725

M.C.D.  
BRIDGE ENGINEER

PROJECT NO.	JOB NO.	SHEET NO.	TOTAL SHEETS
1930	3127	7	30
STATE	FED. AID PROJ. NO.	FISCAL YEAR	SHEET NO.
ARK	265-D	1936	7

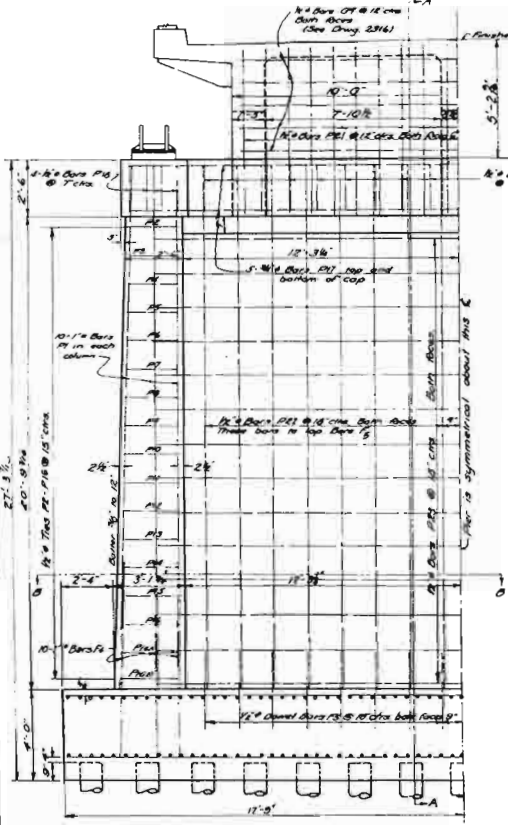


PLAN OF CAP OF PIER NO. 4



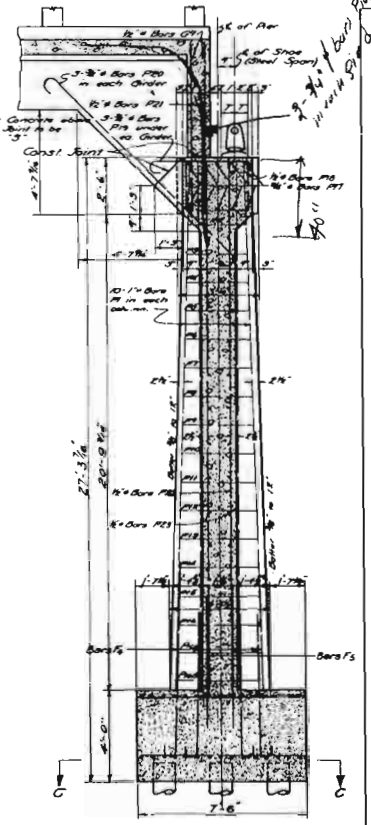
HALF SECTION B-B SHOWING REINFT IN FOOTING

HALF SECTION C-C SHOWING SPACING OF PILES

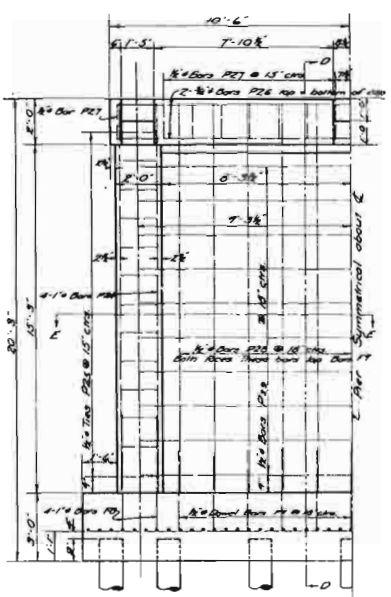


HALF ELEVATION OF PIER NO. 4

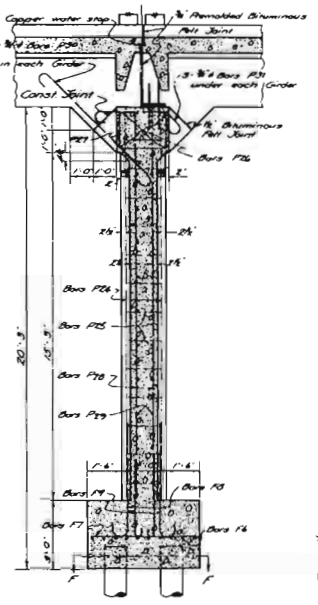
DETAILS OF PIER NO. 4



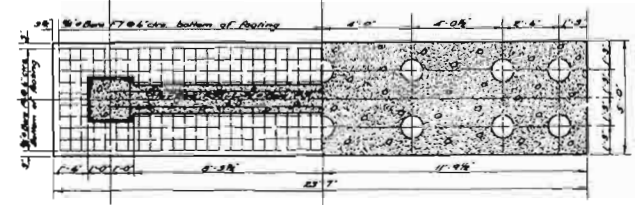
SECTION A-A



HALF ELEV. OF PIERS NO. 1, 2, & 3



SECTION D-D



HALF SECTION E-E HALF SECTION F-F  
DETAILS OF PIERS NO. 1, 2, & 3

Mark	Size	No.	Length	Bending Diagrams
P1	1"	20	7'-3"	
P2	2"	2	10'-7"	
P3	2"	2	10'-0"	
P4	2"	2	11'-0"	
P5	2"	2	11'-8"	
P6	2"	2	11'-2"	
P7	2"	2	11'-2"	
P8	2"	2	11'-2"	
P9	2"	2	11'-2"	
P10	2"	2	11'-2"	
P11	2"	2	11'-2"	
P12	2"	2	11'-2"	
P13	2"	2	11'-2"	
P14	2"	2	11'-2"	
P15	2"	2	11'-2"	
P16	2"	2	11'-2"	
P17	2"	2	11'-2"	
P18	2"	2	11'-2"	
P19	2"	2	11'-2"	
P20	2"	2	11'-2"	
P21	2"	2	11'-2"	
P22	2"	2	11'-2"	
P23	2"	2	11'-2"	
P24	2"	2	11'-2"	
P25	2"	2	11'-2"	
P26	2"	2	11'-2"	
P27	2"	2	11'-2"	
P28	2"	2	11'-2"	
P29	2"	2	11'-2"	
P30	2"	2	11'-2"	
P31	2"	2	11'-2"	
P32	2"	2	11'-2"	
P33	2"	2	11'-2"	
P34	2"	2	11'-2"	
P35	2"	2	11'-2"	
P36	2"	2	11'-2"	
P37	2"	2	11'-2"	
P38	2"	2	11'-2"	
P39	2"	2	11'-2"	
P40	2"	2	11'-2"	
P41	2"	2	11'-2"	
P42	2"	2	11'-2"	
P43	2"	2	11'-2"	
P44	2"	2	11'-2"	
P45	2"	2	11'-2"	
P46	2"	2	11'-2"	
P47	2"	2	11'-2"	
P48	2"	2	11'-2"	
P49	2"	2	11'-2"	
P50	2"	2	11'-2"	
P51	2"	2	11'-2"	
P52	2"	2	11'-2"	
P53	2"	2	11'-2"	
P54	2"	2	11'-2"	
P55	2"	2	11'-2"	
P56	2"	2	11'-2"	
P57	2"	2	11'-2"	
P58	2"	2	11'-2"	
P59	2"	2	11'-2"	
P60	2"	2	11'-2"	
P61	2"	2	11'-2"	
P62	2"	2	11'-2"	
P63	2"	2	11'-2"	
P64	2"	2	11'-2"	
P65	2"	2	11'-2"	
P66	2"	2	11'-2"	
P67	2"	2	11'-2"	
P68	2"	2	11'-2"	
P69	2"	2	11'-2"	
P70	2"	2	11'-2"	
P71	2"	2	11'-2"	
P72	2"	2	11'-2"	
P73	2"	2	11'-2"	
P74	2"	2	11'-2"	
P75	2"	2	11'-2"	
P76	2"	2	11'-2"	
P77	2"	2	11'-2"	
P78	2"	2	11'-2"	
P79	2"	2	11'-2"	
P80	2"	2	11'-2"	
P81	2"	2	11'-2"	
P82	2"	2	11'-2"	
P83	2"	2	11'-2"	
P84	2"	2	11'-2"	
P85	2"	2	11'-2"	
P86	2"	2	11'-2"	
P87	2"	2	11'-2"	
P88	2"	2	11'-2"	
P89	2"	2	11'-2"	
P90	2"	2	11'-2"	
P91	2"	2	11'-2"	
P92	2"	2	11'-2"	
P93	2"	2	11'-2"	
P94	2"	2	11'-2"	
P95	2"	2	11'-2"	
P96	2"	2	11'-2"	
P97	2"	2	11'-2"	
P98	2"	2	11'-2"	
P99	2"	2	11'-2"	
P100	2"	2	11'-2"	

For General Notes see Layout Sheet

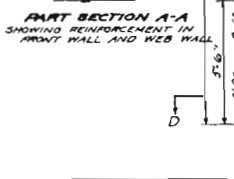
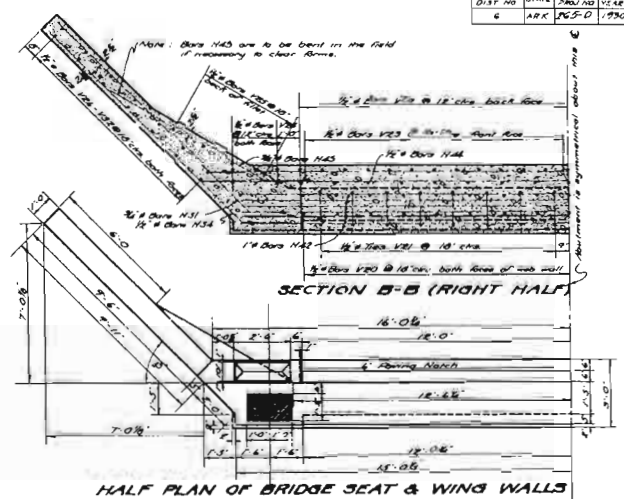
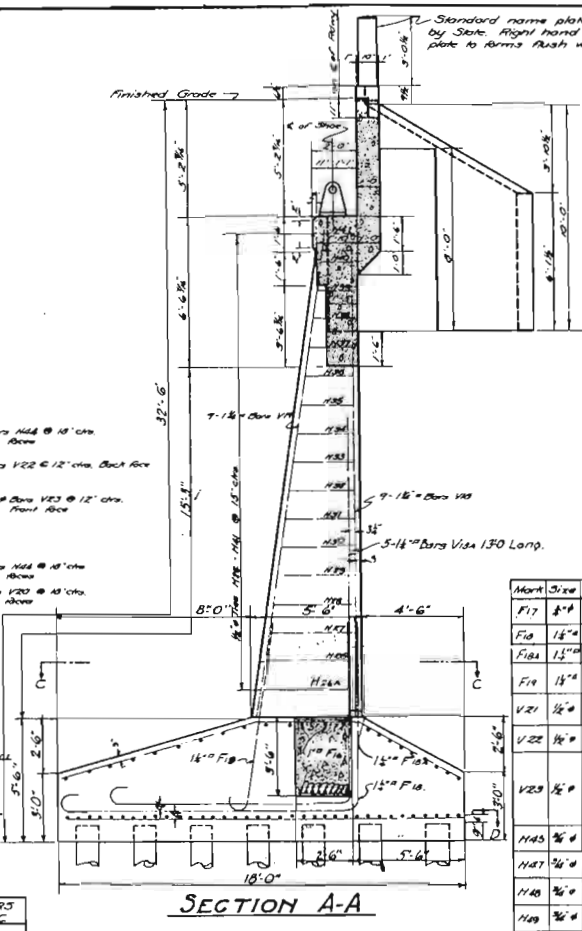
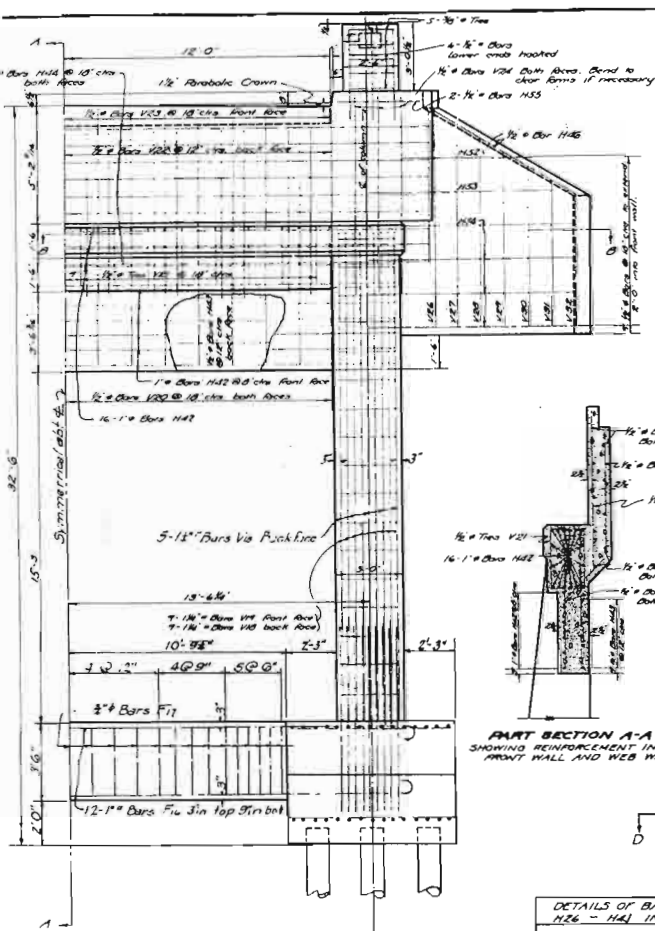
DETAILS OF PIERS FOR BRIDGE OVER SOUTH DITCH OF TERRE NOIR CREEK CLARK COUNTY ROUTE 51 SEC. 1

ARKANSAS STATE HIGHWAY COMMISSION LITTLE ROCK, ARK.

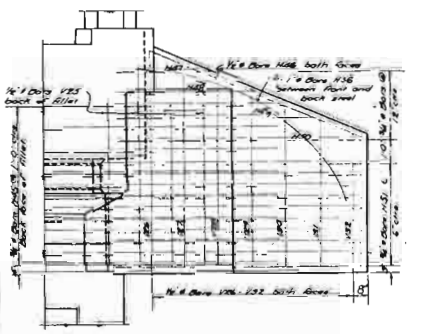
Drawn By: J.C.D. Date: 6-20-36  
 Traced By: J.C.D. Date: 6-20-36  
 Checked By: J.C.D. Date: 6-20-36  
 BRIDGE NO. 1477 DRAWING NO. 272

M.B. Bessie  
 BRIDGE ENGINEER

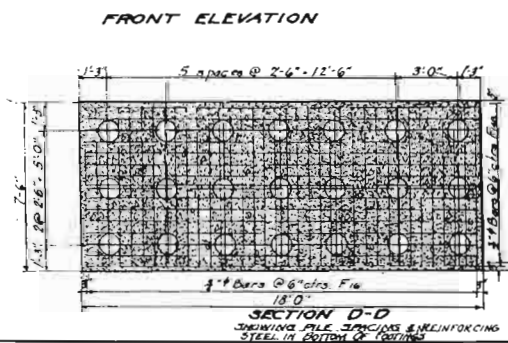
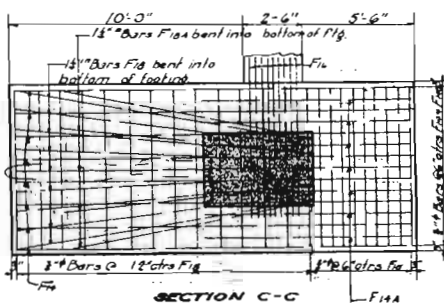
FISCAL YEAR	JOB NO	SHEET NO	TOTAL SHEETS
1930	5127	8	30
FED ROAD DIST NO	STATE	FISCAL YEAR	PROJECT TOTAL NO SHEETS
6	ARK	1930	8 30



Mark	Size	Length	BENDING DIAGRAMS
F17	8#	11'-4"	BARS F17
F18	16#	17'-9"	BARS F18
F18a	15#	22'-4"	BARS F18a
F19	14#	9'-7"	BARS F19
V21	12#	9'-5"	BARS V21
V22	14#	8'-5"	BARS V22
V23	12#	9'-0"	BARS V23
H45	16#	10'-0"	BARS H45
H47	16#	4'-5"	BARS H47
H48	16#	6'-5"	BARS H48
H49	16#	9'-5"	BARS H49
H50	16#	11'-5"	BARS H50
H52	12#	7'-0"	BARS H52
H53	12#	10'-5"	BARS H53
H54	12#	14'-0"	BARS H54
H56	1#	14'-0"	BARS H56
F16	1#	33'-1"	BARS F16
F14	3#	15'-7"	BARS F14
F14a	3#	10'-5"	BARS F14a



Mark	Size	X	Length
H26	16#	5'-8"	18'-0"
H27	2-12#	2'-3"	15'-0"
H28	6-12#	1'-0"	14'-0"
H29	3-12#	1'-0"	14'-0"
H30	3-12#	1'-0"	14'-0"
H31	3-12#	1'-0"	14'-0"
H32	3-12#	1'-0"	14'-0"
H33	3-12#	1'-0"	14'-0"
H34	3-12#	1'-0"	14'-0"
H35	3-12#	1'-0"	14'-0"
H36	3-12#	1'-0"	14'-0"
H37	3-12#	1'-0"	14'-0"
H38	3-12#	1'-0"	14'-0"
H39	3-12#	1'-0"	14'-0"
H40	3-12#	1'-0"	14'-0"
H41	3-12#	1'-0"	14'-0"
H42	3-12#	1'-0"	14'-0"
H43	3-12#	1'-0"	14'-0"
H44	3-12#	1'-0"	14'-0"
H45	3-12#	1'-0"	14'-0"



DETAILS OF ABUTMENT NO. 2  
 FOR BRIDGE OVER  
 SOUTH DITCH OF TERRE NOIR CREEK  
 GURDON - ARKADELPHIA RD.  
 CLARK COUNTY  
 ROUTE 51 SEC. 1  
 ARKANSAS STATE HIGHWAY DEPARTMENT  
 LITTLE ROCK, ARK.  
 Drawn By: M.B. Date: 6-16-30  
 Traced By: M.B. Date: 6-16-30  
 Checked By: J.S.M. Date: 6-16-30  
 BRIDGE NO. 1477 DRAWING NO. 2727

M.B. BRIDGE ENGINEER